

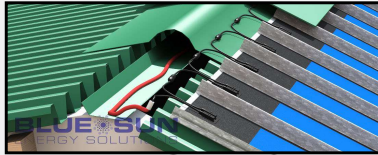
## NEW INTEGRATED PHOTOVOLTAIC ROOFING SYSTEM OFFER- A CUSTOMISED DESIGN SOLUTION FOR RENEWABLE ENERGY PRODUCTION

### UNISOLAR PV LAMINATE PANELS

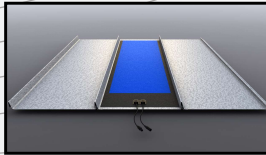
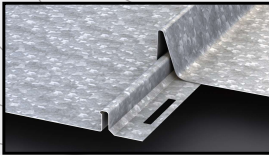
MARCH 2011

WATTS	Panel length	Width	Depth	Weight	Roof sheet length	SQM
68 WATT	2.850M	400MM	4MM	3.9KG	3m	1.14-1.2sqm
128/144 WATT	5.586M	400MM	4MM	7.7KG	6m	2.2-2.4sqm

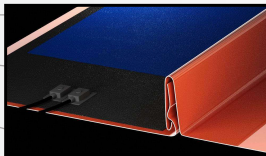
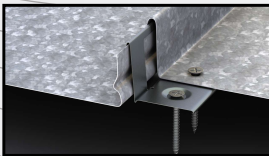
### ROOFING SYSTEMS



#### NAILSTRIP



#### SNAP LOCK



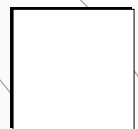
Dove Grey



Volcanic Grey



Colonial Green



White

- Colours: Dove Grey, Volcanic Grey, Colonial Green, White
- Colourbond sheets are quoted in meter lengths, but can be cut to exact length required
- The sheets metal weighs approximately 2.8kgs per running meter or 8.4 or 16.8kgs per panel
- Each PVL panel and Sheet metal combined sheet will weigh approx 11.2 or 22.4 kgs per panel
- We can offer you the system at R60 - R80 per running meter excluding PVL Panels depending on the system

GREEN DESIGN FACILITATION • PHOTOVOLTAIC & SOLAR HOT WATER INSTALLATIONS • LOW ENERGY LIGHTING

info@bluesunenergy.co.za  
t. +27 (0)21 424 1935

www.bluesunenergy.co.za  
f. +27 (0)21 424 1938

Our web link to the Nail Strip product (BIPV roofing system) is  
[http://www.bluesunenergy.co.za/prod\\_solar.html](http://www.bluesunenergy.co.za/prod_solar.html)

1x68 watt (3 meter system)	Snap Lock	R160 per roof sheet R2276 per panel =R2456 per panel + labour
	Nailstrip	R240 per roof R2276 per panel =R2516 per panel + labour
1x128 watt (6 meter system)	Snap Lock	R360 per roof sheet R3702 per panel =R4062 per panel + labour
	Nailstrip	R480 per roof R3702 per panel =R4382 per panel + labour
1x144 watt (6 meter systems)	Snap Lock	R360 per roof sheet R4845 per panel =R5205 per panel + labour
	Nailstrip	R480 per roof R4845 per panel =R5325 per panel + labour

Colourbond R120/sqm

Roofing systems are SABS approved

